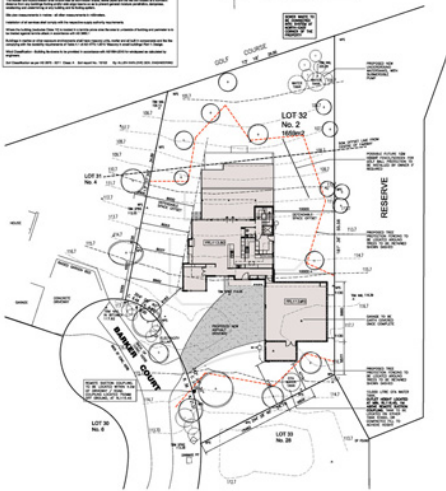


[illegible][illegible]

English Name: 09-08-2011
Chinese Name: 09-08-2011

[illegible]

Proposed Site Plan
Sheet 1.000

[illegible][illegible][illegible]

- 1) The design of the building must be suitable for the intended use and must be suitable for the intended use and must be suitable for the intended use.
- 2) The design of the building must be suitable for the intended use and must be suitable for the intended use and must be suitable for the intended use.
- 3) The design of the building must be suitable for the intended use and must be suitable for the intended use and must be suitable for the intended use.
- 4) The design of the building must be suitable for the intended use and must be suitable for the intended use and must be suitable for the intended use.
- 5) The design of the building must be suitable for the intended use and must be suitable for the intended use and must be suitable for the intended use.
- 6) The design of the building must be suitable for the intended use and must be suitable for the intended use and must be suitable for the intended use.
- 7) The design of the building must be suitable for the intended use and must be suitable for the intended use and must be suitable for the intended use.
- 8) The design of the building must be suitable for the intended use and must be suitable for the intended use and must be suitable for the intended use.
- 9) The design of the building must be suitable for the intended use and must be suitable for the intended use and must be suitable for the intended use.
- 10) The design of the building must be suitable for the intended use and must be suitable for the intended use and must be suitable for the intended use.

[illegible][illegible][illegible]

THE DWELLING WILL BE CONSTRUCTED TO MEET THE
REQUIREMENTS OF
BAL-29 IN ACCORDANCE WITH AS. 3959-2009

[illegible][illegible][illegible][illegible][illegible][illegible]

Detachable Space Management

- Items will be about assigned when requested during the Detached/No longer period
- All items and registration items will be removed or regular items during the Detached/No longer period
- **Notes:**
 - If outside of a building, detachable objects will not be located close to the entrance/exit of the building
 - Please provide time to coordinate to request will not be placed either side of entrance or glass balustrade of the building

- Horizontal and change of value will not exceed 20 %; value 3 times and final the expected by at least 2 months
- There will not occurring in future any elements of the building
- The ceiling of value will be expected by at least 2 months
- There will be a clearance of at least 2 months between the latest two revisions and general book

All food originating from animals and fishery products for the lighting systems will be made of sustainable animal origin. Ingredients such as gelatin, chitosan, glycerol, collagen and calcium lactate (C13-14) must be from sustainable animal origin. The quality certificates from the holding or appropriate distribution documents in the administration of the C13-14 must be provided. The documents are made of fish or a mixture of fish (including the C13-14 sampling).

Animals or fish products originating from the land of the country, accessible within 4.0 meters of the water by the target animals. The waste water supply system must be designed to maintain a difference between the water supply, controlled by C13-14 application, of 100 mm or more. The difference between the water supply and the water level in a collection of C13-14 must not be less than 100 mm.

[illegible]

At work and conforms to the specification and other relevant drawings. Typical drawings include procedures and water dimensions. Check all dimensions on site. Items covered will be submitted to the client upon agreed before the commencement of any fabrication.

© Copyright, Solar Solutions Design & Supply. 2004

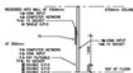
Solar Solutions
DESIGN & SUPPLY

10/1/04 11:59 AM
C:\Program Files\Internet Explorer\Internet Explorer.exe

NOT FOR CONSTRUCTION

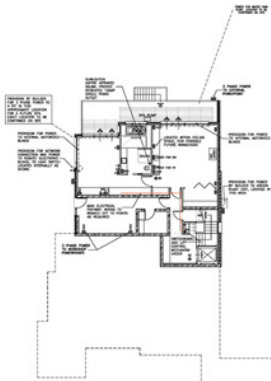
RESEARCHER'S NOTE: THE FOLLOWING INFORMATION IS FOR RESEARCH PURPOSES ONLY.

THE UNIVERSITY OF TEXAS AT AUSTIN
 AUSTIN, TEXAS 78712-1000
 TEL: 512/475-1000 FAX: 512/475-1000
 WWW: WWW.UT-AUTONLINE.EDU



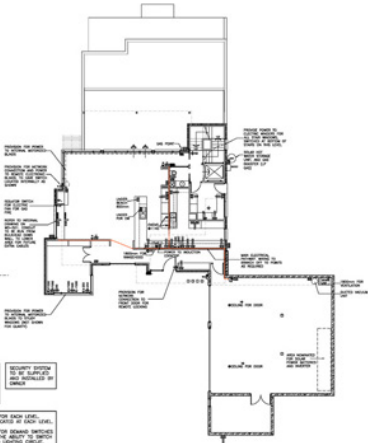
Entertainment Level

2000 10 10



Lower Floor Electrical Plan

1998, 2000, 2001, 2002, 2003, 2004, 2005, 2006, 2007, 2008, 2009, 2010, 2011, 2012, 2013, 2014, 2015, 2016, 2017, 2018, 2019, 2020, 2021, 2022, 2023, 2024, 2025, 2026, 2027, 2028, 2029, 2030, 2031, 2032, 2033, 2034, 2035, 2036, 2037, 2038, 2039, 2040, 2041, 2042, 2043, 2044, 2045, 2046, 2047, 2048, 2049, 2050, 2051, 2052, 2053, 2054, 2055, 2056, 2057, 2058, 2059, 2060, 2061, 2062, 2063, 2064, 2065, 2066, 2067, 2068, 2069, 2070, 2071, 2072, 2073, 2074, 2075, 2076, 2077, 2078, 2079, 2080, 2081, 2082, 2083, 2084, 2085, 2086, 2087, 2088, 2089, 2090, 2091, 2092, 2093, 2094, 2095, 2096, 2097, 2098, 2099, 2100, 2101, 2102, 2103, 2104, 2105, 2106, 2107, 2108, 2109, 2110, 2111, 2112, 2113, 2114, 2115, 2116, 2117, 2118, 2119, 2120, 2121, 2122, 2123, 2124, 2125, 2126, 2127, 2128, 2129, 2130, 2131, 2132, 2133, 2134, 2135, 2136, 2137, 2138, 2139, 2140, 2141, 2142, 2143, 2144, 2145, 2146, 2147, 2148, 2149, 2150, 2151, 2152, 2153, 2154, 2155, 2156, 2157, 2158, 2159, 2160, 2161, 2162, 2163, 2164, 2165, 2166, 2167, 2168, 2169, 2170, 2171, 2172, 2173, 2174, 2175, 2176, 2177, 2178, 2179, 2180, 2181, 2182, 2183, 2184, 2185, 2186, 2187, 2188, 2189, 2190, 2191, 2192, 2193, 2194, 2195, 2196, 2197, 2198, 2199, 2200, 2201, 2202, 2203, 2204, 2205, 2206, 2207, 2208, 2209, 2210, 2211, 2212, 2213, 2214, 2215, 2216, 2217, 2218, 2219, 2220, 2221, 2222, 2223, 2224, 2225, 2226, 2227, 2228, 2229, 2230, 2231, 2232, 2233, 2234, 2235, 2236, 2237, 2238, 2239, 2240, 2241, 2242, 2243, 2244, 2245, 2246, 2247, 2248, 2249, 2250, 2251, 2252, 2253, 2254, 2255, 2256, 2257, 2258, 2259, 2260, 2261, 2262, 2263, 2264, 2265, 2266, 2267, 2268, 2269, 2270, 2271, 2272, 2273, 2274, 2275, 2276, 2277, 2278, 2279, 2280, 2281, 2282, 2283, 2284, 2285, 2286, 2287, 2288, 2289, 2290, 2291, 2292, 2293, 2294, 2295, 2296, 2297, 2298, 2299, 2300, 2301, 2302, 2303, 2304, 2305, 2306, 2307, 2308, 2309, 2310, 2311, 2312, 2313, 2314, 2315, 2316, 2317, 2318, 2319, 2320, 2321, 2322, 2323, 2324, 2325, 2326, 2327, 2328, 2329, 2330, 2331, 2332, 2333, 2334, 2335, 2336, 2337, 2338, 2339, 2340, 2341, 2342, 2343, 2344, 2345, 2346, 2347, 2348, 2349, 2350, 2351, 2352, 2353, 2354, 2355, 2356, 2357, 2358, 2359, 2360, 2361, 2362, 2363, 2364, 2365, 2366, 2367, 2368, 2369, 2370, 2371, 2372, 2373, 2374, 2375, 2376, 2377, 2378, 2379, 2380, 2381, 2382, 2383, 2384, 2385, 2386, 2387, 2388, 2389, 2390, 2391, 2392, 2393, 2394, 2395, 2396, 2397, 2398, 2399, 2400, 2401, 2402, 2403, 2404, 2405, 2406, 2407, 2408, 2409, 2410, 2411, 2412, 2413, 2414, 2415, 2416, 2417, 2418, 2419, 2420, 2421, 2422, 2423, 2424, 2425, 2426, 2427, 2428, 2429, 2430, 2431, 2432, 2433, 2434, 2435, 2436, 2437, 2438, 2439, 2440, 2441, 2442, 2443, 2444, 2445, 2446, 2447, 2448, 2449, 2450, 2451, 2452, 2453, 2454, 2455, 2456, 2457, 2458, 2459, 2460, 2461, 2462, 2463, 2464, 2465, 2466, 2467, 2468, 2469, 2470, 2471, 2472, 2473, 2474, 2475, 2476, 2477, 2478, 2479, 2480, 2481, 2482, 2483, 2484, 2485, 2486, 2487, 2488, 2489, 2490, 2491, 2492, 2493, 2494, 2495, 2496, 2497, 2498, 2499, 2500, 2501, 2502, 2503, 2504, 2505, 2506, 2507, 2508, 2509, 2510, 2511, 2512, 2513, 2514, 2515, 2516, 2517, 2518, 2519, 2520, 2521, 2522, 2523, 2524, 2525, 2526, 2527, 2528, 2529, 2530, 2531, 2532, 2533, 2534, 2535, 2536, 2537, 2538, 2539, 2540, 2541, 2542, 2543, 2544, 2545, 2546, 2547, 2548, 2549, 2550, 2551, 2552, 2553, 2554, 2555, 2556, 2557, 2558, 2559, 2560, 2561, 2562, 2563, 2564, 2565, 2566, 2567, 2568, 2569, 2570, 2571, 2572, 2573, 2574, 2575, 2576, 2577, 2578, 2579, 2580, 2581, 2582, 2583, 2584, 2585, 2586, 2587, 2588, 2589, 2590, 2591, 2592, 2593, 2594, 2595, 2596, 2597, 2598, 2599, 2600, 2601, 2602, 2603, 2604, 2605, 2606, 2607, 2608, 2609, 2610, 2611, 2612, 2613, 2614, 2615, 2616, 2617, 2618, 2619, 2620, 2621, 2622, 2623, 2624, 2625, 2626, 2627, 2628, 2629, 2630, 2631, 2632, 2633, 2634, 2635, 2636, 2637, 2638, 2639, 2640, 2641, 2642, 2643, 2644, 2645, 2646, 2647, 2648, 2649, 2650, 2651, 2652, 2653, 2654, 2655, 2656, 2657, 2658, 2659, 2660, 2661, 2662, 2663, 2664, 2665, 2666, 2667, 2668, 2669, 2670, 2671, 2672, 2673, 2674, 2675, 2676, 2677, 2678, 2679, 2680, 26



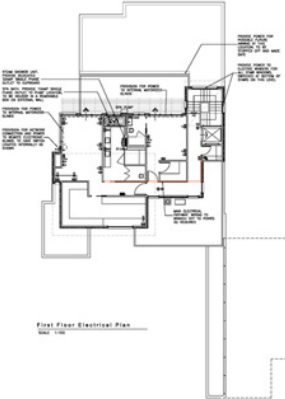
Ground Floor Electrical Plan

5044

ELECTRICAL LEGEND

- [illegible]

Source: *Journal of the American Statistical Association*, 90(430), 1031-1041.

[illegible]

First Floor Electrical Plan

1998, 1999, 2000, 2001, 2002, 2003, 2004, 2005, 2006, 2007, 2008, 2009, 2010, 2011, 2012, 2013, 2014, 2015, 2016, 2017, 2018, 2019, 2020, 2021, 2022, 2023, 2024, 2025, 2026, 2027, 2028, 2029, 2030, 2031, 2032, 2033, 2034, 2035, 2036, 2037, 2038, 2039, 2040, 2041, 2042, 2043, 2044, 2045, 2046, 2047, 2048, 2049, 2050, 2051, 2052, 2053, 2054, 2055, 2056, 2057, 2058, 2059, 2060, 2061, 2062, 2063, 2064, 2065, 2066, 2067, 2068, 2069, 2070, 2071, 2072, 2073, 2074, 2075, 2076, 2077, 2078, 2079, 2080, 2081, 2082, 2083, 2084, 2085, 2086, 2087, 2088, 2089, 2090, 2091, 2092, 2093, 2094, 2095, 2096, 2097, 2098, 2099, 2100, 2101, 2102, 2103, 2104, 2105, 2106, 2107, 2108, 2109, 2110, 2111, 2112, 2113, 2114, 2115, 2116, 2117, 2118, 2119, 2120, 2121, 2122, 2123, 2124, 2125, 2126, 2127, 2128, 2129, 2130, 2131, 2132, 2133, 2134, 2135, 2136, 2137, 2138, 2139, 2140, 2141, 2142, 2143, 2144, 2145, 2146, 2147, 2148, 2149, 2150, 2151, 2152, 2153, 2154, 2155, 2156, 2157, 2158, 2159, 2160, 2161, 2162, 2163, 2164, 2165, 2166, 2167, 2168, 2169, 2170, 2171, 2172, 2173, 2174, 2175, 2176, 2177, 2178, 2179, 2180, 2181, 2182, 2183, 2184, 2185, 2186, 2187, 2188, 2189, 2190, 2191, 2192, 2193, 2194, 2195, 2196, 2197, 2198, 2199, 2200, 2201, 2202, 2203, 2204, 2205, 2206, 2207, 2208, 2209, 2210, 2211, 2212, 2213, 2214, 2215, 2216, 2217, 2218, 2219, 2220, 2221, 2222, 2223, 2224, 2225, 2226, 2227, 2228, 2229, 2230, 2231, 2232, 2233, 2234, 2235, 2236, 2237, 2238, 2239, 2240, 2241, 2242, 2243, 2244, 2245, 2246, 2247, 2248, 2249, 2250, 2251, 2252, 2253, 2254, 2255, 2256, 2257, 2258, 2259, 2260, 2261, 2262, 2263, 2264, 2265, 2266, 2267, 2268, 2269, 2270, 2271, 2272, 2273, 2274, 2275, 2276, 2277, 2278, 2279, 2280, 2281, 2282, 2283, 2284, 2285, 2286, 2287, 2288, 2289, 2290, 2291, 2292, 2293, 2294, 2295, 2296, 2297, 2298, 2299, 2300, 2301, 2302, 2303, 2304, 2305, 2306, 2307, 2308, 2309, 2310, 2311, 2312, 2313, 2314, 2315, 2316, 2317, 2318, 2319, 2320, 2321, 2322, 2323, 2324, 2325, 2326, 2327, 2328, 2329, 2330, 2331, 2332, 2333, 2334, 2335, 2336, 2337, 2338, 2339, 2340, 2341, 2342, 2343, 2344, 2345, 2346, 2347, 2348, 2349, 2350, 2351, 2352, 2353, 2354, 2355, 2356, 2357, 2358, 2359, 2360, 2361, 2362, 2363, 2364, 2365, 2366, 2367, 2368, 2369, 2370, 2371, 2372, 2373, 2374, 2375, 2376, 2377, 2378, 2379, 2380, 2381, 2382, 2383, 2384, 2385, 2386, 2387, 2388, 2389, 2390, 2391, 2392, 2393, 2394, 2395, 2396, 2397, 2398, 2399, 2400, 2401, 2402, 2403, 2404, 2405, 2406, 2407, 2408, 2409, 2410, 2411, 2412, 2413, 2414, 2415, 2416, 2417, 2418, 2419, 2420, 2421, 2422, 2423, 2424, 2425, 2426, 2427, 2428, 2429, 2430, 2431, 2432, 2433, 2434, 2435, 2436, 2437, 2438, 2439, 2440, 2441, 2442, 2443, 2444, 2445, 2446, 2447, 2448, 2449, 2450, 2451, 2452, 2453, 2454, 2455, 2456, 2457, 2458, 2459, 2460, 2461, 2462, 2463, 2464, 2465, 2466, 2467, 2468, 2469, 2470, 2471, 2472, 2473, 2474, 2475, 2476, 2477, 2478, 2479, 2480, 2481, 2482, 2483, 2484, 2485, 2486, 2487, 2488, 2489, 2490, 2491, 2492, 2493, 2494, 2495, 2496, 2497, 2498, 2499, 2500, 2501, 2502, 2503, 2504, 2505, 2506, 2507, 2508, 2509, 2510, 2511, 2512, 2513, 2514, 2515, 2516, 2517, 2518, 2519, 2520, 2521, 2522, 2523, 2524, 2525, 2526, 2527, 2528, 2529, 2530, 2531, 2532, 2533, 2534, 2535, 2536, 2537, 2538, 2539, 2540, 2541, 2542, 2543, 2544, 2545, 2546, 2547, 2548, 2549, 2550, 2551, 2552, 2553, 2554, 2555, 2556, 2557, 2558, 2559, 2560, 2561, 2562, 2563, 2564, 2565, 2566, 2567, 2568, 2569, 2570, 2571, 2572, 2573, 2574, 2575, 2576, 2577, 2578, 2579, 2580, 2581, 2582, 2583, 2584, 2585, 2586, 2587, 2588, 2589, 2590, 2591, 2592, 2593, 2594, 2595, 2596, 2597, 2598, 2599, 2600, 2601, 2602, 2603, 2604, 2605, 2606, 2607, 2608, 2609, 2610, 2611, 2612, 2613, 2614, 2615, 2616, 2617, 2618, 2619, 2620, 2621, 2622, 2623, 2624, 2625, 2626, 2627, 2628, 2629, 2630, 2631, 2632, 2633, 2634, 2635, 2636, 2637, 2638, 2639, 2640, 2641, 2642, 2643, 2644, 2645, 2646, 2647, 2648, 2649, 2650, 2651, 2652, 2653, 2654, 2655, 2656, 2657, 2658, 2659, 2660, 2661, 2662, 2663, 2664, 2665, 2666, 2667, 2668, 2669, 2670, 2671, 2672, 2673, 2674, 2675, 2676, 2677, 2678, 2679, 26

NOTORIZED BLINDS TO ALL
METHUEN, STUY, BLANF,
AND FARMER'S WIND
AS SHOWN, EXACT POWER
LOCATIONS TO BE CONFIRMED
ON SITE. BLINDS TO ALLOW
FOR POWER CONNECTION.

ALL WIRING TO BE GROUPED TOGETHER AS MUCH AS POSSIBLE TO CREATE NEAT WIRING PATHWAYS. WIRING TO THEN BRANCH OFF AS REQUIRED.	SECURITY SYSTEM TO BE SUPPLIED AND INSTALLED BY OWNER
--	---

SECURITY SYSTEM
TO BE SUPPLIED
AND INSTALLED BY
OWNER

3 PHASE POWER REQUIRED
TO WORKSHOP AND REAR
DECK POWERPOINT AS NOTED

PROVISION TO BE MADE FOR DEMAND SWITCHES TO BE INSTALLED WITH THE ABILITY TO SWITCH OFF POWER CIRCUIT AND LIGHTING CIRCUIT.

NOT FOR CONSTRUCTION

It will still conform to the specification and other relevant drawings. Figure dimensions take precedence over verbal description. Check all dimensions on site. This drawing shall be submitted to the office for approval before the commencement of any fabrication.

© Copyright Sider Structures Design & Drafting, 2014



Year	2000	2001	2002
Revenue	100	100	100
Cost	100	100	100
Profit	0	0	0

Source: www.merck.com



[illegible]

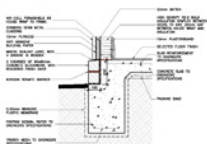
©Copyright Inter Solutions Design & Drafting, 2019



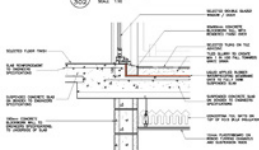
July 1/1998 Stud. Prod.
Marine, Volume 2/11
Page 110-111 1/11
Fax 110-111 1/11
Website
www.marineprod.com



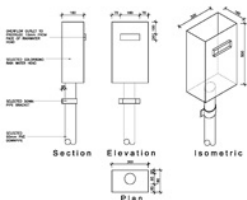
NOT FOR CONSTRUCTION



16 Detail
SCALE: 1/8"

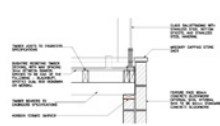


17 Detail
SCALE: 1/8"

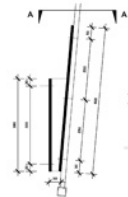


Typical Rain Water Head Detail

SCALE: 1/8"
NOTES:
1. RAIN HEAD SHALL BE INSTALLED WITH 1/2\"/>

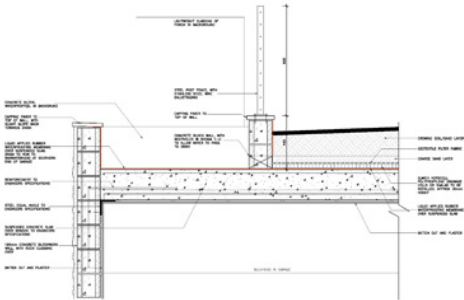


18 Detail
SCALE: 1/8"



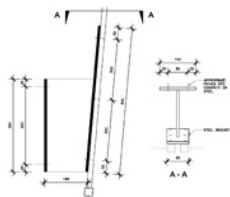
Privacy Screen Bracket Detail (Upper Balcony)

SCALE: 1/8"



Garage Roof Detail

SCALE: 1/8"

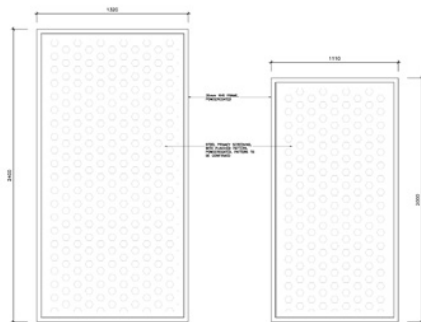


Bracket Detail

SCALE: 1/8"

General Notes for Installation:
1. All materials and workmanship shall conform to the requirements of the applicable building codes and standards.
2. The installer shall be responsible for obtaining all necessary permits and approvals for the installation.
3. The installer shall be responsible for obtaining all necessary permits and approvals for the installation.
4. The installer shall be responsible for obtaining all necessary permits and approvals for the installation.
5. The installer shall be responsible for obtaining all necessary permits and approvals for the installation.
6. The installer shall be responsible for obtaining all necessary permits and approvals for the installation.
7. The installer shall be responsible for obtaining all necessary permits and approvals for the installation.
8. The installer shall be responsible for obtaining all necessary permits and approvals for the installation.
9. The installer shall be responsible for obtaining all necessary permits and approvals for the installation.
10. The installer shall be responsible for obtaining all necessary permits and approvals for the installation.

NOT FOR CONSTRUCTION



Roof Garden Screening
6 x 1300mm (3 x 1150mm over Bed 3)

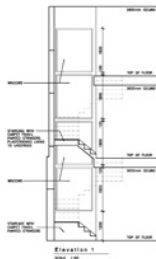
SCALE 1:10

Balcony Screening
8 x 1150mm

SCALE 1:10

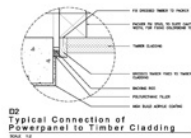
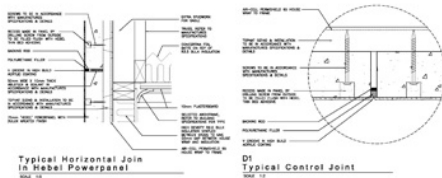
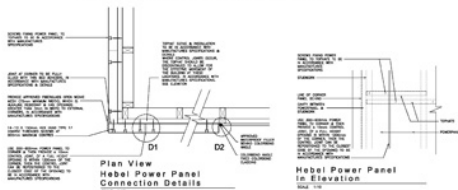


Plan
SCALE 1:10



Elevation 1
SCALE 1:10

HEBEL CONNECTION DETAILS



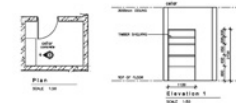
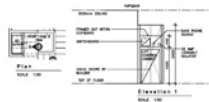
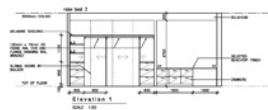
NOT FOR CONSTRUCTION

Notes:
1. All work shall conform to the specification and other
relevant standards. Special attention shall be given to
the installation of the screening and the connection of the
screening to the structure. It is the client's responsibility to
ensure the construction of any structure.



Solar Solutions Pty Ltd
Units 10/11, 12/13, 14/15, 16/17, 18/19, 20/21, 22/23, 24/25, 26/27, 28/29, 30/31, 32/33, 34/35, 36/37, 38/39, 40/41, 42/43, 44/45, 46/47, 48/49, 50/51, 52/53, 54/55, 56/57, 58/59, 60/61, 62/63, 64/65, 66/67, 68/69, 70/71, 72/73, 74/75, 76/77, 78/79, 80/81, 82/83, 84/85, 86/87, 88/89, 90/91, 92/93, 94/95, 96/97, 98/99, 100/101, 102/103, 104/105, 106/107, 108/109, 110/111, 112/113, 114/115, 116/117, 118/119, 120/121, 122/123, 124/125, 126/127, 128/129, 130/131, 132/133, 134/135, 136/137, 138/139, 140/141, 142/143, 144/145, 146/147, 148/149, 150/151, 152/153, 154/155, 156/157, 158/159, 160/161, 162/163, 164/165, 166/167, 168/169, 170/171, 172/173, 174/175, 176/177, 178/179, 180/181, 182/183, 184/185, 186/187, 188/189, 190/191, 192/193, 194/195, 196/197, 198/199, 200/201, 202/203, 204/205, 206/207, 208/209, 210/211, 212/213, 214/215, 216/217, 218/219, 220/221, 222/223, 224/225, 226/227, 228/229, 230/231, 232/233, 234/235, 236/237, 238/239, 240/241, 242/243, 244/245, 246/247, 248/249, 250/251, 252/253, 254/255, 256/257, 258/259, 260/261, 262/263, 264/265, 266/267, 268/269, 270/271, 272/273, 274/275, 276/277, 278/279, 280/281, 282/283, 284/285, 286/287, 288/289, 290/291, 292/293, 294/295, 296/297, 298/299, 300/301, 302/303, 304/305, 306/307, 308/309, 310/311, 312/313, 314/315, 316/317, 318/319, 320/321, 322/323, 324/325, 326/327, 328/329, 330/331, 332/333, 334/335, 336/337, 338/339, 340/341, 342/343, 344/345, 346/347, 348/349, 350/351, 352/353, 354/355, 356/357, 358/359, 360/361, 362/363, 364/365, 366/367, 368/369, 370/371, 372/373, 374/375, 376/377, 378/379, 380/381, 382/383, 384/385, 386/387, 388/389, 390/391, 392/393, 394/395, 396/397, 398/399, 400/401, 402/403, 404/405, 406/407, 408/409, 410/411, 412/413, 414/415, 416/417, 418/419, 420/421, 422/423, 424/425, 426/427, 428/429, 430/431, 432/433, 434/435, 436/437, 438/439, 440/441, 442/443, 444/445, 446/447, 448/449, 450/451, 452/453, 454/455, 456/457, 458/459, 460/461, 462/463, 464/465, 466/467, 468/469, 470/471, 472/473, 474/475, 476/477, 478/479, 480/481, 482/483, 484/485, 486/487, 488/489, 490/491, 492/493, 494/495, 496/497, 498/499, 500/501, 502/503, 504/505, 506/507, 508/509, 510/511, 512/513, 514/515, 516/517, 518/519, 520/521, 522/523, 524/525, 526/527, 528/529, 530/531, 532/533, 534/535, 536/537, 538/539, 540/541, 542/543, 544/545, 546/547, 548/549, 550/551, 552/553, 554/555, 556/557, 558/559, 560/561, 562/563, 564/565, 566/567, 568/569, 570/571, 572/573, 574/575, 576/577, 578/579, 580/581, 582/583, 584/585, 586/587, 588/589, 590/591, 592/593, 594/595, 596/597, 598/599, 600/601, 602/603, 604/605, 606/607, 608/609, 610/611, 612/613, 614/615, 616/617, 618/619, 620/621, 622/623, 624/625, 626/627, 628/629, 630/631, 632/633, 634/635, 636/637, 638/639, 640/641, 642/643, 644/645, 646/647, 648/649, 650/651, 652/653, 654/655, 656/657, 658/659, 660/661, 662/663, 664/665, 666/667, 668/669, 670/671, 672/673, 674/675, 676/677, 678/679, 680/681, 682/683, 684/685, 686/687, 688/689, 690/691, 692/693, 694/695, 696/697, 698/699, 700/701, 702/703, 704/705, 706/707, 708/709, 710/711, 712/713, 714/715, 716/717, 718/719, 720/721, 722/723, 724/725, 726/727, 728/729, 730/731, 732/733, 734/735, 736/737, 738/739, 740/741, 742/743, 744/745, 746/747, 748/749, 750/751, 752/753, 754/755, 756/757, 758/759, 760/761, 762/763, 764/765, 766/767, 768/769, 770/771, 772/773, 774/775, 776/777, 778/779, 780/781, 782/783, 784/785, 786/787, 788/789, 790/791, 792/793, 794/795, 796/797, 798/799, 800/801, 802/803, 804/805, 806/807, 808/809, 810/811, 812/813, 814/815, 816/817, 818/819, 820/821, 822/823, 824/825, 826/827, 828/829, 830/831, 832/833, 834/835, 836/837, 838/839, 840/841, 842/843, 844/845, 846/847, 848/849, 850/851, 852/853, 854/855, 856/857, 858/859, 860/861, 862/863, 864/865, 866/867, 868/869, 870/871, 872/873, 874/875, 876/877, 878/879, 880/881, 882/883, 884/885, 886/887, 888/889, 890/891, 892/893, 894/895, 896/897, 898/899, 900/901, 902/903, 904/905, 906/907, 908/909, 910/911, 912/913, 914/915, 916/917, 918/919, 920/921, 922/923, 924/925, 926/927, 928/929, 930/931, 932/933, 934/935, 936/937, 938/939, 940/941, 942/943, 944/945, 946/947, 948/949, 950/951, 952/953, 954/955, 956/957, 958/959, 960/961, 962/963, 964/965, 966/967, 968/969, 970/971, 972/973, 974/975, 976/977, 978/979, 980/981, 982/983, 984/985, 986/987, 988/989, 990/991, 992/993, 994/995, 996/997, 998/999, 1000/1001, 1002/1003, 1004/1005, 1006/1007, 1008/1009, 1010/1011, 1012/1013, 1014/1015, 1016/1017, 1018/1019, 1020/1021, 1022/1023, 1024/1025, 1026/1027, 1028/1029, 1030/1031, 1032/1033, 1034/1035, 1036/1037, 1038/1039, 1040/1041, 1042/1043, 1044/1045, 1046/1047, 1048/1049, 1050/1051, 1052/1053, 1054/1055, 1056/1057, 1058/1059, 1060/1061, 1062/1063, 1064/1065, 1066/1067, 1068/1069, 1070/1071, 1072/1073, 1074/1075, 1076/1077, 1078/1079, 1080/1081, 1082/1083, 1084/1085, 1086/1087, 1088/1089, 1090/1091, 1092/1093, 1094/1095, 1096/1097, 1098/1099, 1100/1101, 1102/1103, 1104/1105, 1106/1107, 1108/1109, 1110/1111, 1112/1113, 1114/1115, 1116/1117, 1118/1119, 1120/1121, 1122/1123, 1124/1125, 1126/1127, 1128/1129, 1130/1131, 1132/1133, 1134/1135, 1136/1137, 1138/1139, 1140/1141, 1142/1143, 1144/1145, 1146/1147, 1148/1149, 1150/1151, 1152/1153, 1154/1155, 1156/1157, 1158/1159, 1160/1161, 1162/1163, 1164/1165, 1166/1167, 1168/1169, 1170/1171, 1172/1173, 1174/1175, 1176/1177, 1178/1179, 1180/1181, 1182/1183, 1184/1185, 1186/1187, 1188/1189, 1190/1191, 1192/1193, 1194/1195, 1196/1197, 1198/1199, 1200/1201, 1202/1203, 1204/1205, 1206/1207, 1208/1209, 1210/1211, 1212/1213, 1214/1215, 1216/1217, 1218/1219, 1220/1221, 1222/1223, 1224/1225, 1226/1227, 1228/1229, 1230/1231, 1232/1233, 1234/1235, 1236/1237, 1238/1239, 1240/1241, 1242/1243, 1244/1245, 1246/1247, 1248/1249, 1250/1251, 1252/1253, 1254/1255, 1256/1257, 1258/1259, 1260/1261, 1262/1263, 1264/1265, 1266/1267, 1268/1269, 1270/1271, 1272/1273, 1274/1275, 1276/1277, 1278/1279, 1280/1281, 1282/1283, 1284/1285, 1286/1287, 1288/1289, 1290/1291, 1292/1293, 1294/1295, 1296/1297, 1298/1299, 1300/1301, 1302/1303, 1304/1305, 1306/1307, 1308/1309, 1310/1311, 1312/1313, 1314/1315, 1316/1317, 1318/1319, 1320/1321, 1322/1323, 1324/1325, 1326/1327, 1328/1329, 1330/1331, 1332/1333, 1334/1335, 1336/1337, 1338/1339, 1340/1341, 1342/1343, 1344/1345, 1346/1347, 1348/1349, 1350/1351, 1352/1353, 1354/1355, 1356/1357, 1358/1359, 1360/1361, 1362/1363, 1364/1365, 1366/1367, 1368/1369, 1370/1371, 1372/1373, 1374/1375, 1376/1377, 1378/1379, 1380/1381, 1382/1383, 1384/1385, 1386/1387, 1388/1389, 1390/1391, 1392/1393, 1394/1395, 1396/1397, 1398/1399, 1400/1401, 1402/1403, 1404/1405, 1406/1407, 1408/1409, 1410/1411, 1412/1413, 1414/1415, 1416/1417, 1418/1419, 1420/1421, 1422/1423, 1424/1425, 1426/1427, 1428/1429, 1430/1431, 1432/1433, 1434/1435, 1436/1437, 1438/1439, 1440/1441, 1442/1443, 1444/1445, 1446/1447, 1448/1449, 1450/1451, 1452/1453, 1454/1455, 1456/1457, 1458/1459, 1460/1461, 1462/1463, 1464/1465, 1466/1467, 1468/1469, 1470/1471, 1472/1473, 1474/1475, 1476/1477, 1478/1479, 1480/1481, 1482/1483, 1484/1485, 1486/1487, 1488/1489, 1490/1491, 1492/1493, 1494/1495, 1496/1497, 1498/1499, 1500/1501, 1502/1503, 1504/1505, 1506/1507, 1508/1509, 1510/1511, 1512/1513, 1514/1515, 1516/1517, 1518/1519, 1520/1521, 1522/1523, 1524/1525, 1526/1527, 1528/1529, 1530/1531, 1532/1533, 1534/1535, 1536/1537, 1538/1539, 1540/1541, 1542/1543, 1544/1545, 1546/1547, 1548/1549, 1550/1551, 1552/1553, 1554/1555, 1556/1557, 1558/1559, 1560/1561, 1562/1563, 1564/1565, 1566/1567, 1568/1569, 1570/1571, 1572/1573, 1574/1575, 1576/1577, 1578/1579, 1580/1581, 1582/1583, 1584/1585, 1586/1587, 1588/1589, 1590/1591, 1592/1593, 1594/1595, 1596/1597, 1598/1599, 1600/1601, 1602/1603, 1604/1605, 1606/1607, 1608/1609, 1610/1611, 1612/1613, 1614/1615, 1616/1617, 1618/1619, 1620/1621, 1622/1623, 1624/1625, 1626/1627, 1628/1629, 1630/1631, 1632/1633, 1634/1635, 1636/1637, 1638/1639, 1640/1641, 1642/1643, 1644/1645, 1646/1647, 1648/1649, 1650/1651, 1652/1653, 1654/1655, 1656/1657, 1658/1659, 1660/1661, 1662/1663, 1664/1665, 1666/1667, 1668/1669, 1670/1671, 1672/1673, 1674/1675, 1676/1677, 1678/1679, 1680/1681, 1682/1683, 1684/1685, 1686/1687, 1688/1689, 1690/1691, 1692/1693, 1694/1695, 1696/1697, 1698/1699, 1700/1701, 1702/1703, 1704/1705, 1706/1707, 1708/1709, 1710/1711, 1712/1713, 1714/1715, 1716/1717, 1718/1719, 1720/1721, 1722/1723, 1724/1725, 1726/1727, 1728/1729, 1730/1731, 1732/1733, 1734/1735, 1736/1737, 1738/1739, 1740/1741, 1742/1743, 1744/1745, 1746/1747, 1748/1749, 1750/1751, 1752/1753, 1754/1755, 1756/1757, 1758/1759, 1760/1761, 1762/1763, 1764/1765, 1766/1767, 1768/1769, 1770/1771, 1772/1773, 1774/1775, 1776/1777, 1778/1779, 1780/1781, 1782/1783, 1784/1785, 1786/1787, 1788/1789, 1790/1791, 1792/1793, 1794/1795, 1796/1797, 1798/1799, 1800/1801, 1802/1803, 1804/1805, 1806/1807, 1808/1809, 1810/1811, 1812/1813, 1814/1815, 1816/1817, 1818/1819, 1820/1821, 1822/1823, 1824/1825, 1826/1827, 1828/1829, 1830/1831, 1832/1833, 1834/1835, 1836/1837, 1838/1839, 1840/1841, 1842/1843, 1844/1845, 1846/1847, 1848/1849, 1850/1851, 1852/1853, 1854/1855, 1856/1857, 1858/1859, 1860/1861, 1862/1863, 1864/1865, 1866/1867, 1868/1869, 1870/1871, 1872/1873, 1874/1875, 1876/1877, 1878/1879, 1880/1881, 1882/1883, 1884/1885, 1886/1887, 1888/1889, 1890/1891, 1892/1893, 1894/1895, 1896/1897, 1898/1899, 1900/1901, 1902/1903, 1904/1905, 1906/1907, 1908/1909, 1910/1911, 1912/1913, 1914/1915, 1916/1917, 1918/1919, 1920/1921, 1922/1923, 1924/1925, 1926/1927, 1928/1929, 1930/1931, 1932/1933, 1934/1935, 1936/1937, 1938/1939, 1940/1941, 1942/1943, 1944/1945, 1946/1947, 1948/1949, 1950/1951, 1952/1953, 1954/1955, 1956/1957, 1958/1959, 1960/1961, 1962/1963, 1964/1965, 1966/1967, 1968/1969, 1970/1971, 1972/1973, 1974/1975, 1976/1977, 1978/1979, 1980/1981, 1982/1983, 1984/1985, 1986/1987, 1988/1989, 1990/1991, 1992/1993, 1994/1995, 1996/1997, 1998/1999, 2000/2001, 2002/2003, 2004/2005, 2006/2007, 2008/2009, 2010/2011, 2012/2013, 2014/2015, 2016/2017, 2018/2019, 2020/2021, 2022/2023, 2024/2025, 2026/2027, 2028/2029, 2030/2031, 2032/2033, 2034/2035, 2036/2037, 2038/2039, 2040/2041, 2042/2043, 2044/2045, 2046/2047, 2048/2049, 2050/2051, 2052/2053, 2054/2055, 2056/2057, 2058/2059, 2060/2061, 2062/2063, 2064/2065, 2066/2067, 2068/2069, 2070/2071, 2072/2073, 2074/2075, 2076/2077, 2078/2079, 2080/2081, 2082/2083, 2084/2085, 2086/2087, 2088/2089, 2090/2091, 2092/2093, 2094/2095, 2096/2097, 2098/2099, 2100/2101, 2102/2103, 2104/2105, 2106/2107, 2108/2109, 2110/2111, 2112/2113, 2114/2115, 2116/2117, 2118/2119, 2120/2121, 2122/2123, 2124/2125, 2126/2127, 2128/2129, 2130/2131, 2132/2133, 2134/2135, 2136/2137, 2138/2139, 2140/2141, 2142/2143, 2144/2145, 2146/2147, 2148/2149, 2150/2151, 2152/2153, 2154/2155, 2156/2157, 2158/2159, 2160/2161, 2162/2163, 2164/2165, 2166/2167, 2168/2169, 2170/2171, 2172/2173, 2174/2175, 2176/2177, 2178/2179, 2180/2181, 2182/2183, 2184/2185, 2186/2187, 2188/2189, 2190/2191, 2192/2193, 2194/2195, 2196/2197, 2198/2199, 2200/2201, 2202/2203, 2204/2205, 2206/2207, 2208/2209, 2210/2211, 2212/2213, 2214/2215, 2216/2217, 2218/2219, 2220/2221,





A.S. ADJUSTABLE
SHELVING

ALL DIMENSIONS ARE TO FRAMEWORK AND DO NOT INCLUDE PLASTERBOARD OR TILING THICKNESS. ALL DIMENSIONS MUST BE CHECKED ON SITE PRIOR TO CONSTRUCTION OF CABINETS

Source: *Survey of the Health of the Nation*, 1994.

¹Figures presented are preliminary and subject to revision.

These data have been processed by the authors and by the effect of two variables Ph_{100} (°C/h) and Ph_{200} (°C/h) on the degradation of the biodegradable polymers. The degradation rate of the polymers is defined as the mass loss of the polymers in weight per unit of time. The degradation rate is defined as the mass loss of the polymers in weight per unit of time.

The agreement by the author(s) of a submission, representing, accepting, publishing, submitting or other for a journal, constitutes the full and exclusive agreement, they and/or their agent in connection with, and in relation to the agreement and/or other available for their handling, forwarding, prior to submitting the work and/or material.

© 2000 Blackwell Science Ltd *Journal of Internal Medicine* 247: 395–401

1

© Copyright Inter Solutions Design & Drafting, 2014



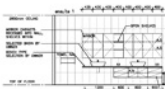
1000 N. 17th Ave. Ste. 200
 Phoenix, AZ 85003
 Phone: (602) 955-7147
 Fax: (602) 955-7147
 Website:
www.adherentsupply.com



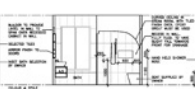
NOT FOR CONSTRUCTION



Plan
SCALE 1/8" = 1'-0"



Elevation 1
SCALE 1/8" = 1'-0"



Elevation 2
SCALE 1/8" = 1'-0"



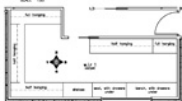
Elevation 3
SCALE 1/8" = 1'-0"



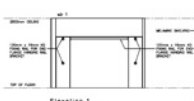
Elevation 4
SCALE 1/8" = 1'-0"



Elevation 5
SCALE 1/8" = 1'-0"



Plan
SCALE 1/8" = 1'-0"



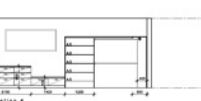
Elevation 1
SCALE 1/8" = 1'-0"



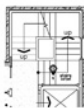
Elevation 2
SCALE 1/8" = 1'-0"



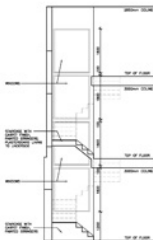
Elevation 3
SCALE 1/8" = 1'-0"



Elevation 4
SCALE 1/8" = 1'-0"



Plan
SCALE 1/8" = 1'-0"



Elevation 1
SCALE 1/8" = 1'-0"



Plan
SCALE 1/8" = 1'-0"



Elevation 1
SCALE 1/8" = 1'-0"



Plan
SCALE 1/8" = 1'-0"



Elevation 1
SCALE 1/8" = 1'-0"

A.S. ADJUSTABLE
SHELVING

ALL DIMENSIONS ARE TO
FRAMEWORK AND DO NOT
INCLUDE PLASTERBOARD OR
TILING THICKNESS. ALL
DIMENSIONS MUST BE CHECKED
ON SITE PRIOR TO
CONSTRUCTION OF CABINETS

General Notes

- 1. All dimensions are to the face of the cabinet unless otherwise specified.
- 2. All dimensions are to the face of the cabinet unless otherwise specified.
- 3. All dimensions are to the face of the cabinet unless otherwise specified.

4. All dimensions are to the face of the cabinet unless otherwise specified.

5. All dimensions are to the face of the cabinet unless otherwise specified.

6. All dimensions are to the face of the cabinet unless otherwise specified.

7. All dimensions are to the face of the cabinet unless otherwise specified.

8. All dimensions are to the face of the cabinet unless otherwise specified.

9. All dimensions are to the face of the cabinet unless otherwise specified.

10. All dimensions are to the face of the cabinet unless otherwise specified.

11. All dimensions are to the face of the cabinet unless otherwise specified.

12. All dimensions are to the face of the cabinet unless otherwise specified.

13. All dimensions are to the face of the cabinet unless otherwise specified.

14. All dimensions are to the face of the cabinet unless otherwise specified.

15. All dimensions are to the face of the cabinet unless otherwise specified.

NOT FOR CONSTRUCTION

Notes

1. All dimensions are to the face of the cabinet unless otherwise specified.

2. All dimensions are to the face of the cabinet unless otherwise specified.

3. All dimensions are to the face of the cabinet unless otherwise specified.

4. All dimensions are to the face of the cabinet unless otherwise specified.

5. All dimensions are to the face of the cabinet unless otherwise specified.



16. All dimensions are to the face of the cabinet unless otherwise specified.

17. All dimensions are to the face of the cabinet unless otherwise specified.